

TABLE OF CONTENTS

1.	Drive Chassis Assembly.....	1
1.1.	Steer System Installation.....	1
1.2.	Pothole Guard Installation.....	3
1.3.	Door Installation	5
1.4.	Left Box Installation	6
1.5.	Right Box Installation	8
2.	Scissor Assembly	10
2.1.	Scissor Assembly (GTJZ0408S)	10
2.2.	Scissor Assembly (GTJZ0608S)	13
3.	Platform.....	16
3.1.	Platform Control Box.....	16
3.2.	Platform Extension.....	17
3.3.	Fixed Platform.....	20
4.	Scissor Assembly Installation	23
5.	Hydraulic System.....	25
5.1.	Hydraulic Hoses and Fittings	25
5.2.	Function Manifold..... 202040000002.....	27
5.3.	Lifting Control Manifold..... 202040000002.....	28
5.4.	Manual Brake Release Manifold..... 202040000003	28
6.	Electrical Wiring.....	29
7.	Decals	30

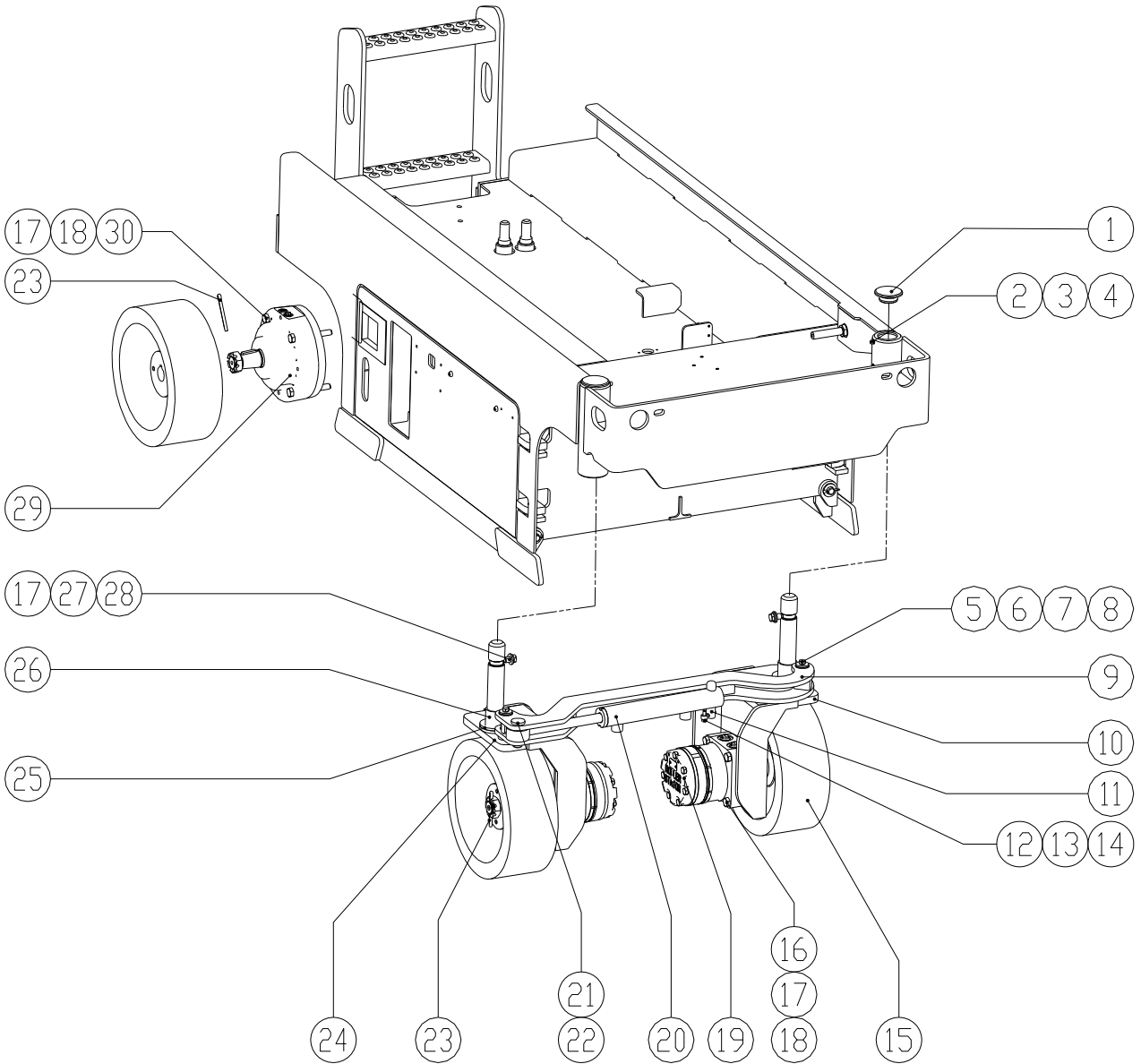
Contact us:Website: www.sinoboom.comE-Mail: overseas@sinoboom.com.cn

Hotline: 400-601-5828

Fax: 0086-731-87116516

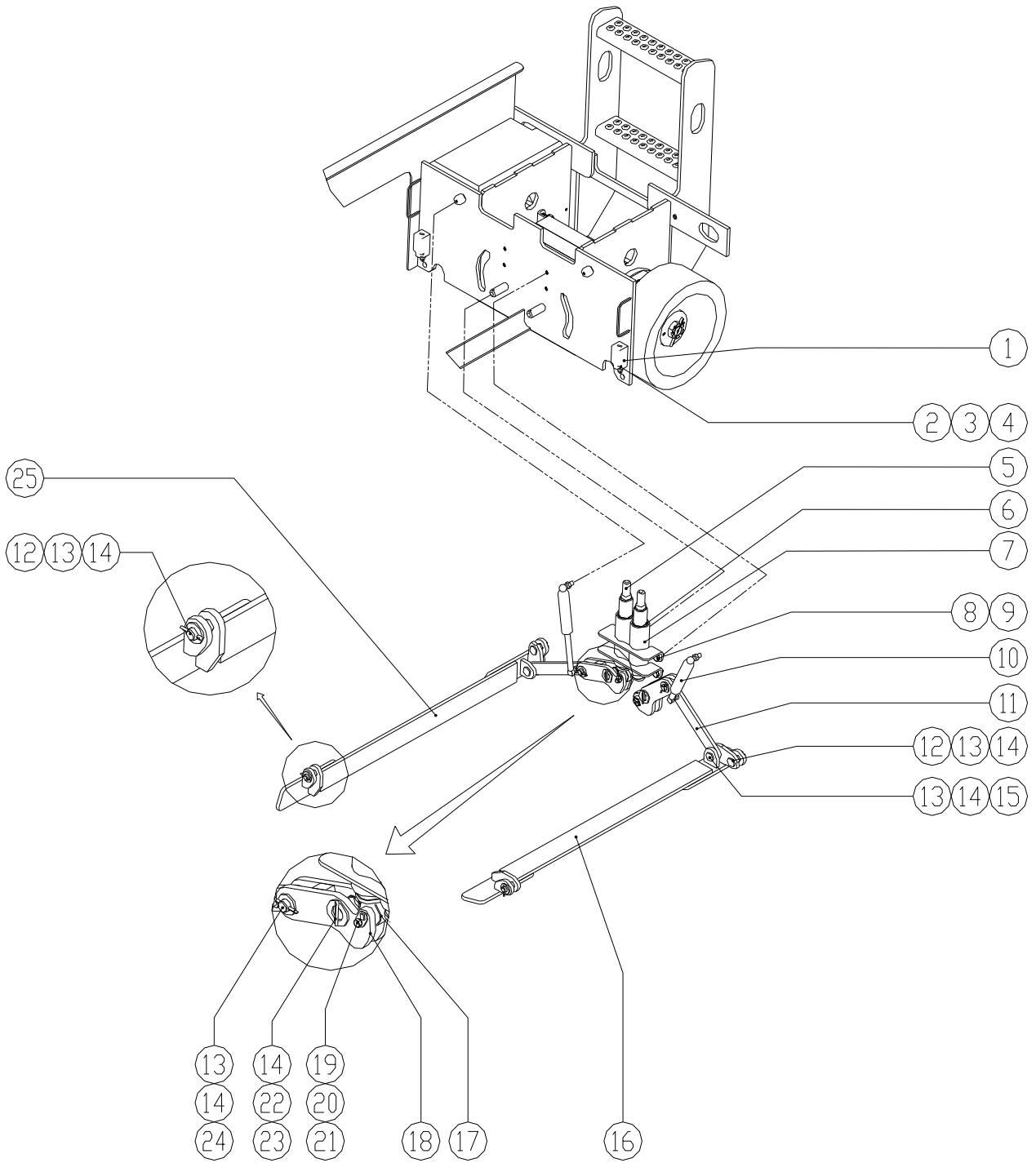
1. Drive Chassis Assembly

1.1. Steer System Installation



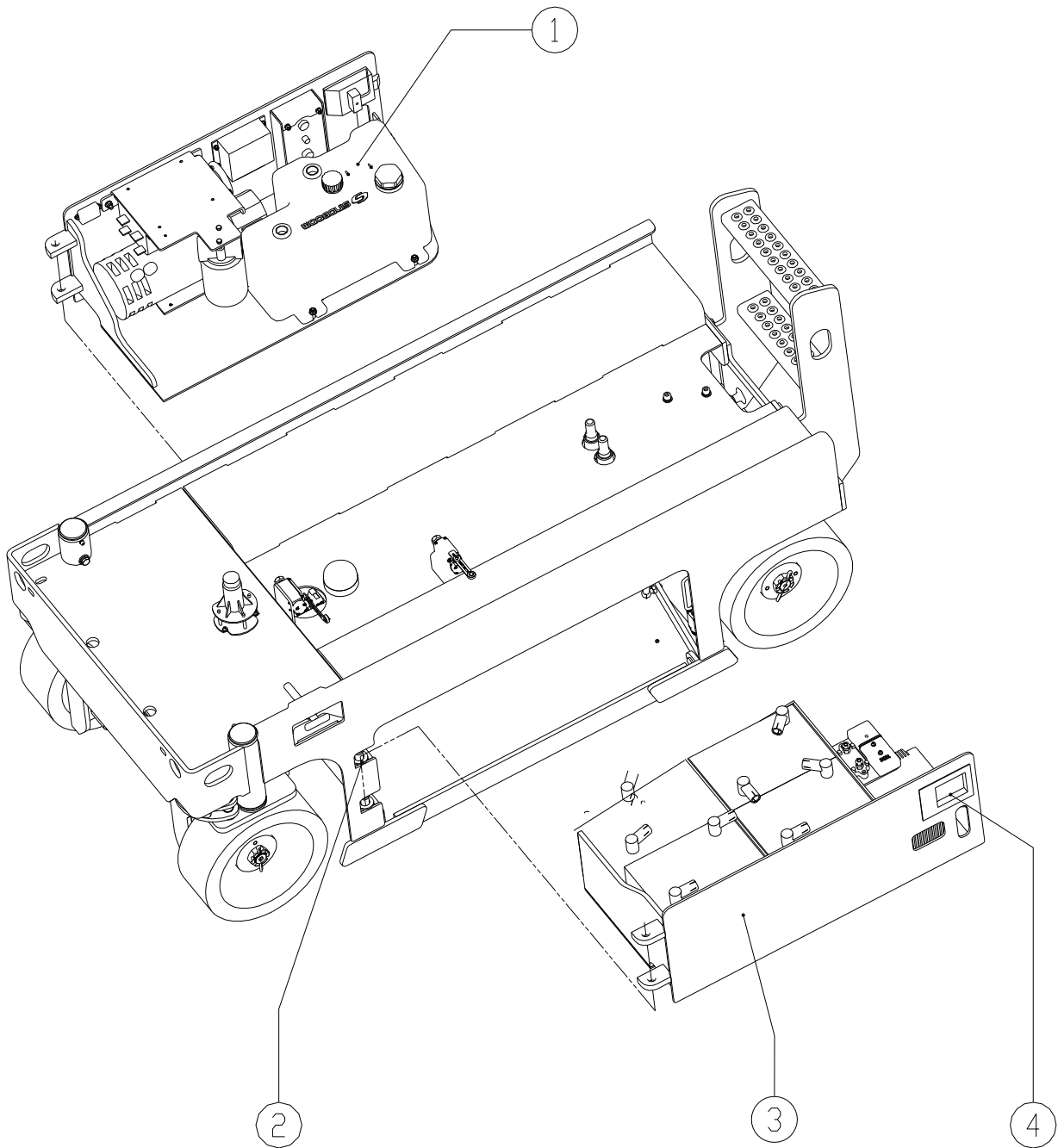
Item	Code	Qty	Description	Remark
1	101012030068	2	Cover	
2	215020000008	2	Bolt M5×20-8.8	
3	215040000003	2	Washer 5	
4	215040000032	2	Washer 5-200HV	
5	215010000056	2	Bolt M8×16-8.8	
6	215040000005	2	Washer 8	
7	215040000103	2	The Most Washer 8	
8	214030000003	4	Flanch Bearing	
9	101012030090	1	Tie Rod Assembly	
10	101012030056	1	Wheel Carrier(Left)	
11	101012030062	1	Pin	
12	215010000051	1	Bolt M6×20-8.8	
13	215040000004	1	Washer 6	
14	101012010070	1	Rod End	
15	204080000001	4	Tire	
16	215010000015	8	Bolt M12×80-8.8	
17	215040000007	18	Washer 12	
18	215030000008	16	Nut M12	
19	202020000002	2	Hydraulic Motor	
20	101012050014	1	Steer Cylinder	
21	215060000065	1	Pin B20×55	
22	215060000066	1	Pin 4×25	
23	215060000015	4	Pin 6.3×63	
24	101012030058	1	Wheel Carrier(Right)	
25	101012030002	2	Washer	
26	214030000004	4	Bearing 35×41×40	
27	101012030074	2	Screw	
28	215040000037	2	Washer 12-200HV	
29	202050000001	2	Hydraulic Brake	
30	215010000016	8	Bolt M12×90-8.8	

1.2. Pothole Guard Installation



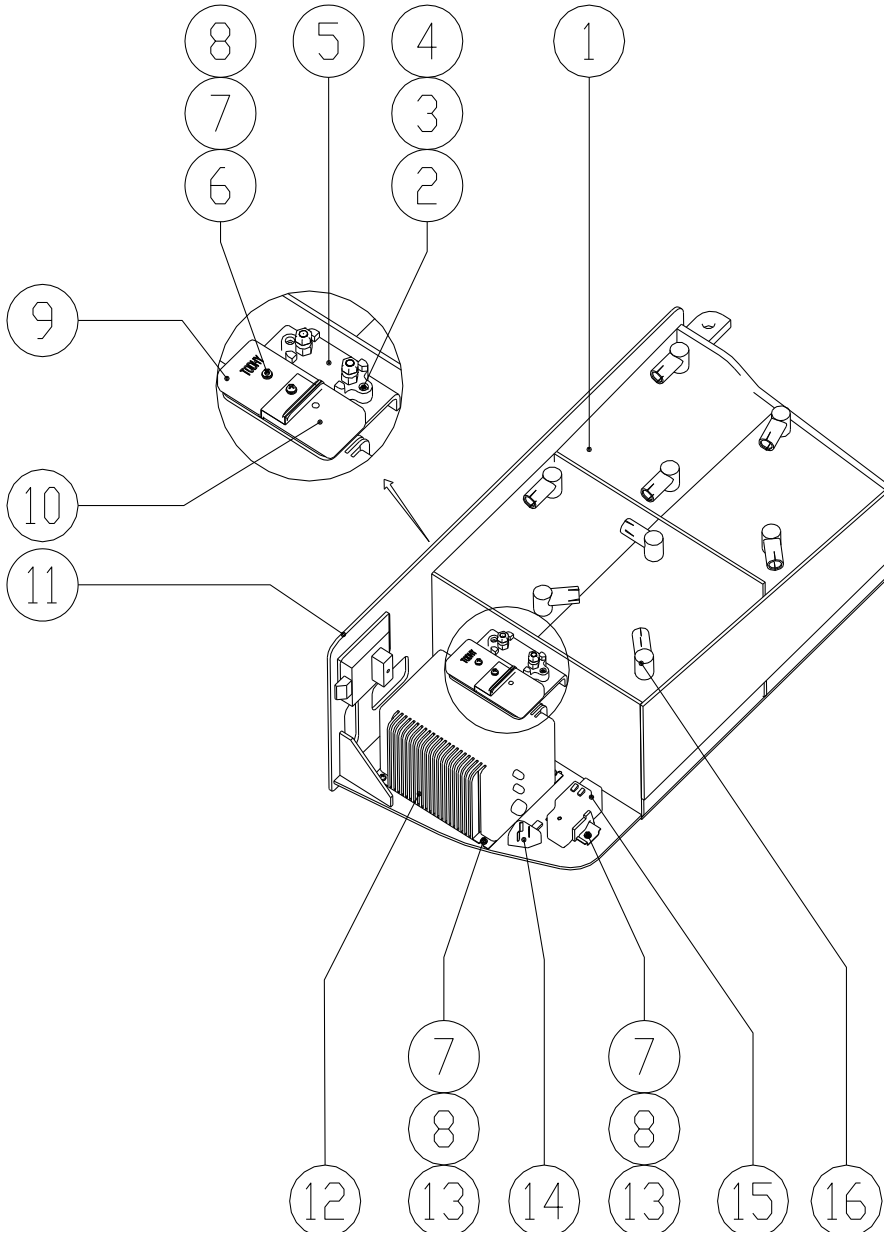
Item	Code	Qty	Description	Remark
1	203060000007	2	Limit Switch	
2	215020000211	4	Bolt M4×30-4.8	
3	215040000031	4	Washer 4-200HV	
4	215040000002	4	Washer 4	
5	101012030072	2	Assy	
6	214030000001	4	Bearing 35×39×30	
7	101012030013	1	Guide Sleeve	
8	215010000068	4	Bolt M10×20-8.8	
9	215040000006	4	Washer 10	
10	210010000002	2	Air Support	
11	101012030031	2	Plate	
12	215060000038	4	Pin B16×45	
13	215040000039	8	Washer 16-200HV	
14	215060000066	10	Pin 4×25	
15	215060000064	2	Pin B16×50	
16	101012030048	1	Pot Hole Guard (Left)	
17	101012030075	2	Roller	
18	101012030076	2	Pothle Bell Crnk Link	
19	101012030102	2	Pin	
20	215010000049	2	Bolt M6×12	
21	215040000004	2	Washer 6	
22	215040000041	2	Washer 20-200HV	
23	214030000003	2	Flanch Bearing GFM-2023-11	
24	101012030008	2	Pin	
25	101012030024	1	Pot Hole Guard (Right)	

1.3. Door Installation



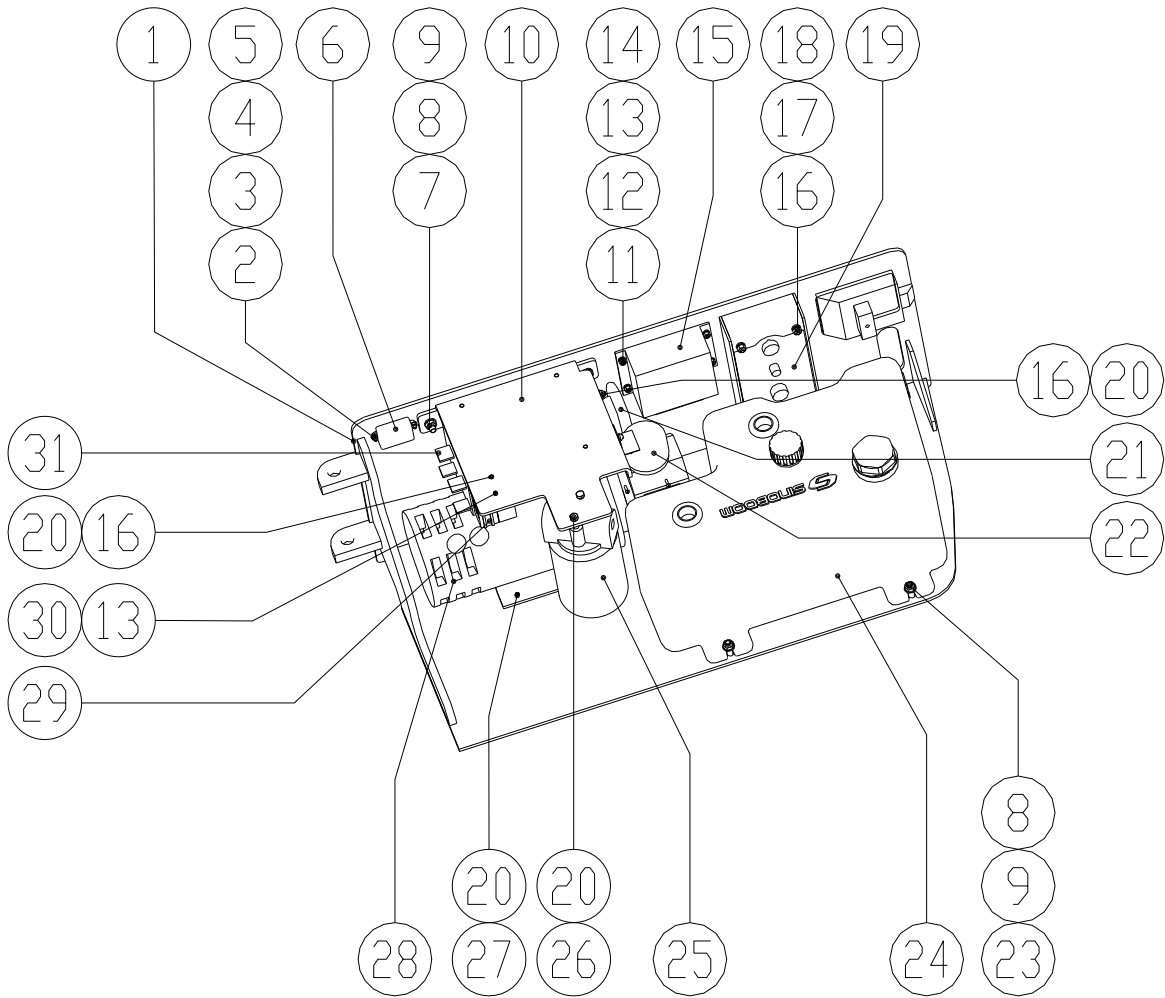
Item	Code	Qty	Description	Remark
1	101012030099	1	Right Box	
2	215040000041	4	Washer 20-200HV	
3	101012030073	1	Left Box	
4	209050000001	2	Latch MS866-3	

1.4. Left Box Installation



Item	Code	Qty	Description	Remark
1	203100000002	4	Battery	
2	215020000106	2	Bolt M4×16-4.8	
3	215040000002	2	Washer 4	
4	215040000031	2	Washer 4-200HV	
5	203100000003	2	Puse	
6	215020000114	2	Bolt M5×30-4.8	
7	215040000003	8	Washer 5	
8	215040000032	8	Washer 5-200HV	
9	203080000002	1	Interrupt Plug	
10	203080000002	1	Interrupt Plug	
11	101012030084	1	Left Door Weldment	
12	203100000001	1	Battery Charger	
13	215020000109	6	Bolt M5×10	
14	203080000003	1	Plug	
15	203160000002	1	Monophasic creepage protector	
16	203080000004	8	PVC Sheath	

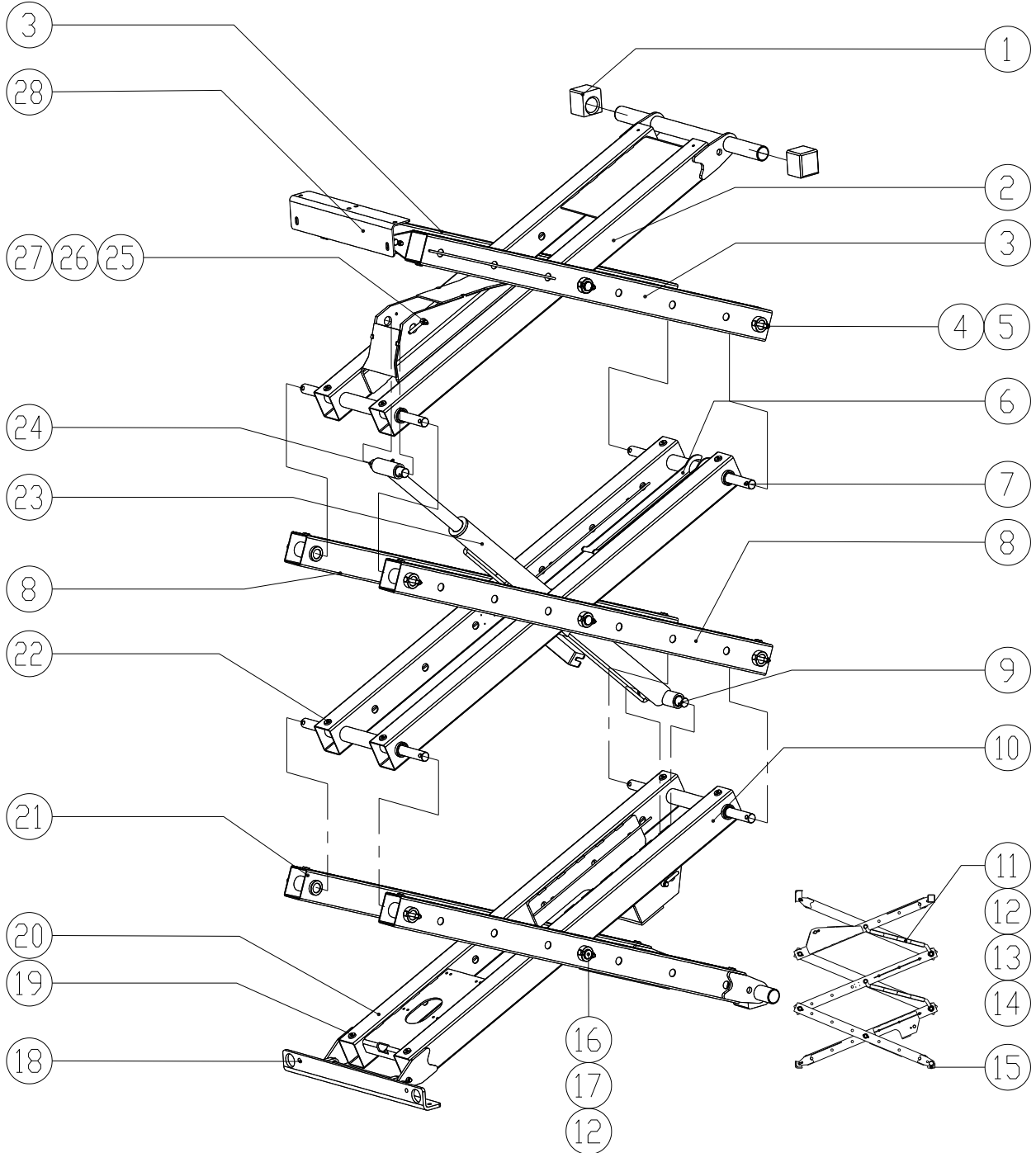
1.5. Right Box Installation



Item	Code	QTY	Description	REMARK
1	101012030029	1	Right Door Weldment	
2	215020000106	2	Bolt M4×16-4.8	
3	215040000031	2	Washer 4-200HV	
4	215040000002	2	Washer 4	
5	215030000002	2	Nut M4	
6	203190000001	1	Power Converter	
7	215020000122	2	Bolt M8×25-4.8	
8	215040000034	5	Washer 8-200HV	
9	215030000026	5	Nut M8	
10	101012030010	1	Plate	
11	215020000111	4	Bolt M5×16-4.8	
12	215040000032	4	Washer 5-200HV	
13	215040000003	5	Washer 5	
14	215030000003	4	Nut M5	
15	203020000001	1	ECU	
16	215020000116	10	Bolt M6×16-4.8	
17	215040000033	4	Washer 6-200HV	
18	215030000025	4	Nut M6	
19	101012060002	1	Plate	
20	215040000004	10	Washer 6	
21	203050000001	1	Waterproof Horn	
22	203050000002	1	Buzzer	
23	215010000059	3	Bolt M8×30-8.8	
24	202110000001	1	Hydraulic Tank Assembly	
25	202080000001	1	Filter Assy	
26	215010000050	2	Bolt M6×16-8.8	
27	215010000049	4	Bolt M6×12-8.8	
28	101012050002	1	Electric Motor/Pump	
29	203040000001	1	Relay	
30	215020000109	1	Bolt M5×10-4.8	
31	203020000002	1	Contactoer	

2. Scissor Assembly

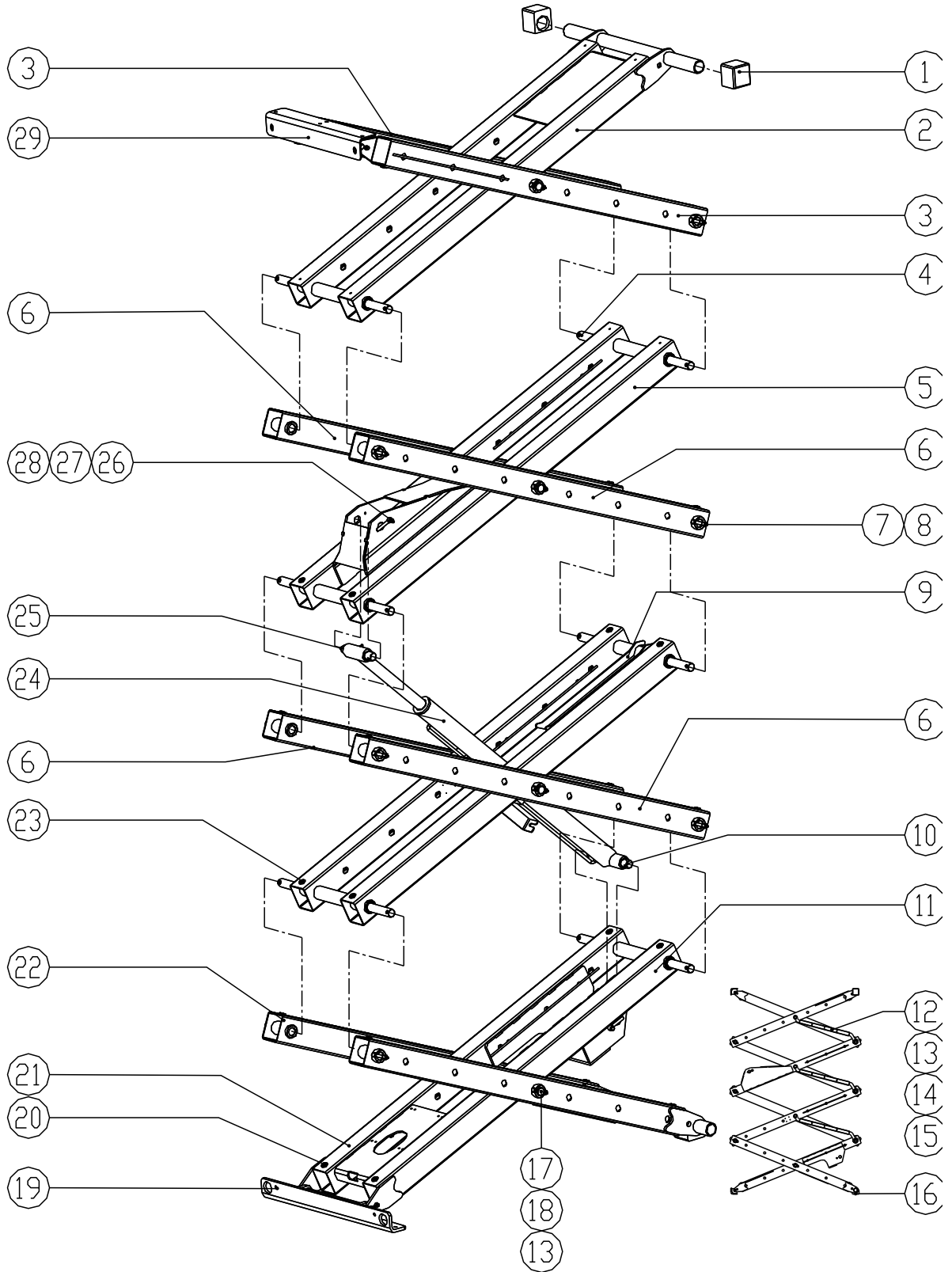
2.1. Scissor Assembly (GTJZ0408S)



Item	Part Number	Qty	Description	Remark
1	101012010052	2	Slider	
2	101012010040	1	Inner Arm Assy #3	
	214030000006	6	Bearing	
	101012010057	2	Bearing	
3	101012010037	1	Outer Arm Assy #3	
4	215010000010	14	Screw M10×60-8.8	
5	215030000027	16	Nut M10	
6	101012010059	1	Safety Chock	
7	101012010062	4	Pin	
8	101012010042	2	Outer Arm Assy #2	
9	101012010032	1	Pin	
10	101012010055	1	Inner Arm Assy #1	
	214030000006	6	Bearing	
	101012010057	2	Bearing	
11	101012010063	2	Cable Bridge	
12	215040000096	6	Snap Ring30	
13	101012010035	2	Rubber	
14	216020000002	2	Clamp 40-55	
15	101012010022	2	Slider	
16	101012010056	6	Pin	
17	101012010075	4	Washer	
18	101012010069	1	Chassis Mount Assy	
	214080000001	2	Pin	
	101012010070	2	Rod End	
	215010000051	2	Screw M6×20-8.8	
	215040000004	2	Washer 6	
	101012010004	1	Pin	
19	101012010068	16	Rubber	
20	101012010055	1	Inner Arm Assy #1	
	214030000006	6	Bearing	
	101012010057	2	Bearing	
21	101012010023	1	Outer Arm Assy #1	

22	101012010009	1	Inner Arm Assy #2	
22	214030000006	8	Bearing	
	101012010057	2	Bearing	
23	101012010066	1	Lift Cylinder	
	101012010046	1	Plate	
	215020000022	3	Screw M8×16 - 8.8	
	215040000005	2	Washer 8	
24	101012010016	1	Pin	
25	101012010044	2	Rod End	
26	215010000058	2	Screw M8×25-8.8	
27	215040000005	2	Washer 8	
28	101012010051	1	Platform Mount Assy	
	214080000001	2	Pin	
	101012010070	2	Rod End	
	215010000051	2	Screw M6×20-8.8	
	215040000004	2	Washer 6	
	101012010019	1	Pin	

2.2. Scissor Assembly (GTJZ0608S)

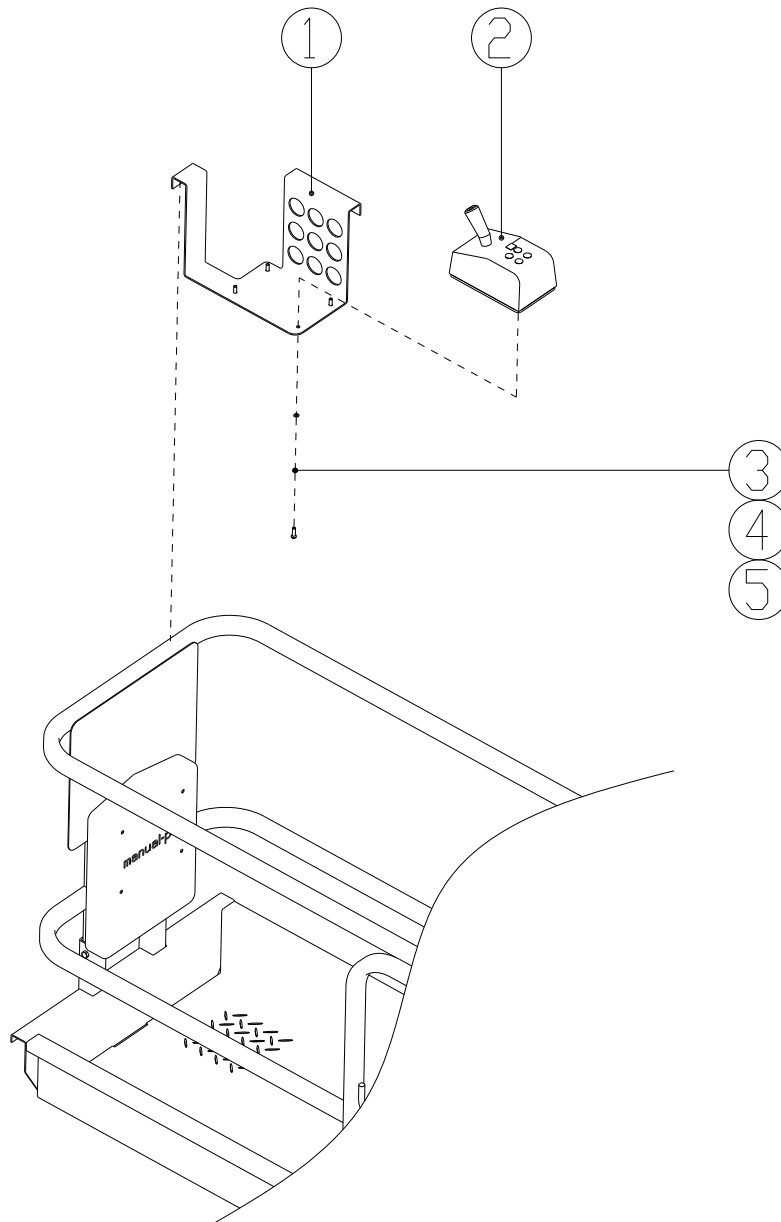


Item	Part Number	Qty	Description	Remark
1	101012010052	2	Slider	
2	101011010005	1	Inner Arm Assy #4	
	214030000006	6	Bearing	
	101012010057	2	Bearing	
3	101012010037	1	Outer Arm Assy #3	
4	101012010062	6	Pin	
5	101011010002	1	Inner Arm Assy #3	
	214030000006	8	Bearing	
	101012010057	2	Bearing	
6	101012010042	4	Outer Arm Assy #2	
7	215010000010	20	Screw M10×60-8.8	
8	215030000027	22	Nut M10	
9	101012010059	1	Safety Chock	
10	101012010032	1	Pin	
11	101012010055	1	Inner Arm Assy #1	
	214030000006	6	Bearing	
	101012010057	2	Bearing	
12	101012010063	3	Cable Bridge	
13	215040000096	8	Snap Ring 30	
14	101012010035	3	Rubber	
15	216020000002	3	Clamp 40-55	
16	101012010022	2	Slider	
17	101012010056	8	Pin	
18	101012010075	5	Washer	
19	101012010069	1	Chassis Mount Assy	
	214080000001	2	Pin	
	101012010070	2	Rod End	
	215010000051	2	Screw M6×20-8.8	
	215040000004	2	Washer 6	
	101012010004	1	Pin	
20	101012010068	24	Rubber	
21	101012010055	1	Inner Arm Assy #1	

	214030000006	6	Bearing	
	101012010057	2	Bearing	
22	101012010023	1	Outer Arm Assy #1	
23	101012010009	1	Inner Arm Assy #2	
	214030000006	8	Bearing	
	101012010057	2	Bearing	
24	101012010066	1	Lift Cylinder	
	101012010046	1	Plate	
	215020000022	3	Screw M8×16 - 8.8	
	215040000005	2	Washer 8	
25	101012010016	1	Pin	
26	101012010044	2	Rod End	
27	215010000058	2	Screw M8×25-8.8	
28	215040000005	2	Washer 8	
29	101011010003	1	Platform Mount Assy	
	214080000001	2	Pin	
	101012010070	2	Rod End	
	215010000051	2	Screw M6×20-8.8	
	215040000004	2	Washer 6	
	101012010019	1	Pin	

3. Platform

3.1. Platform Control Box



Item	Part Number	Qty	Description	Remark
1	6040-610000-1020	1	Bracket	
2	3506035	1	Control-Box	
3	4504012	4	Washer 6-200HV	
4	4501003	4	Washer 6	
5	4131006	4	Screw M5×20-4.8	

3.2. Platform Extension

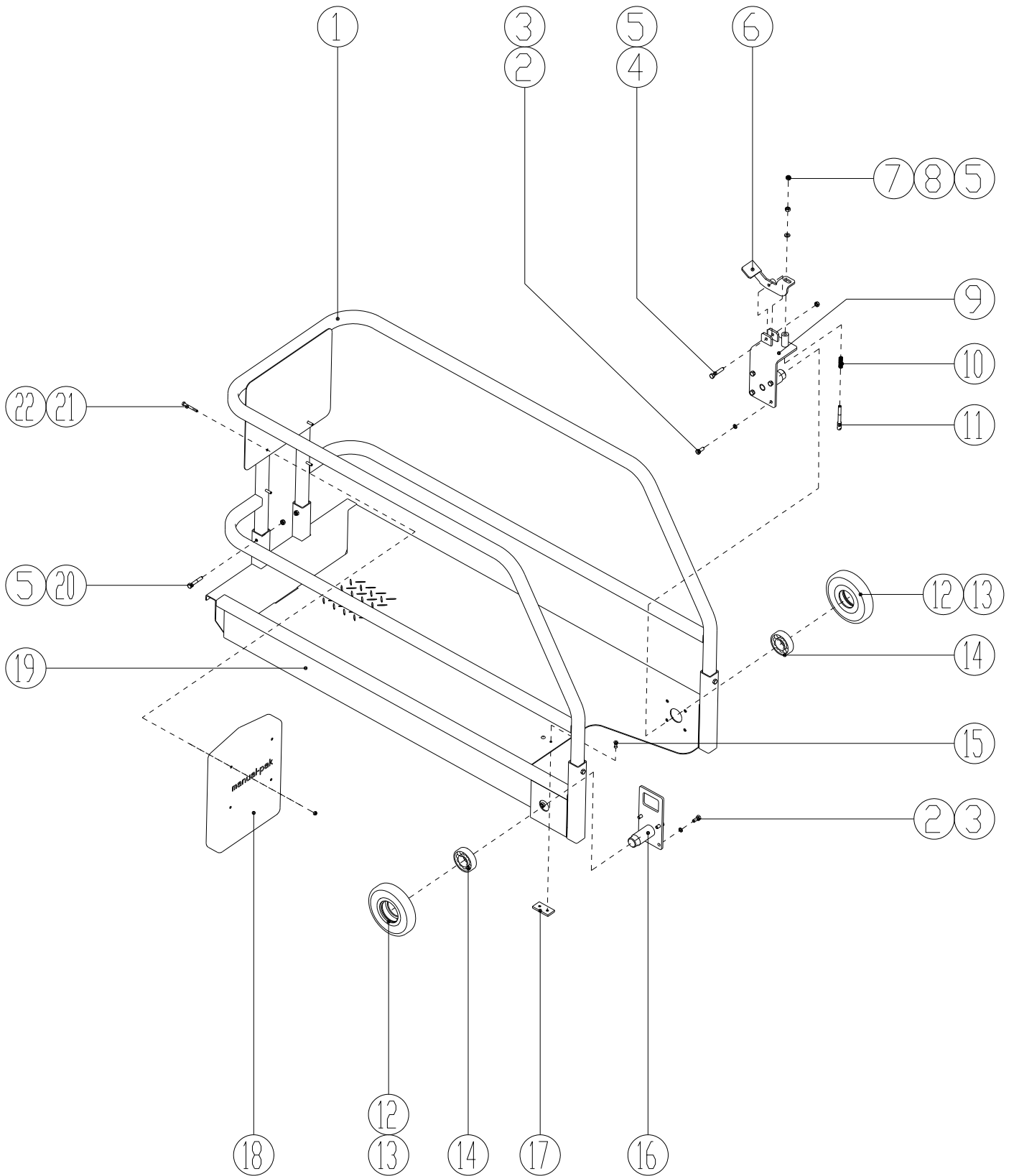


Chart 3-2-1 Fixed

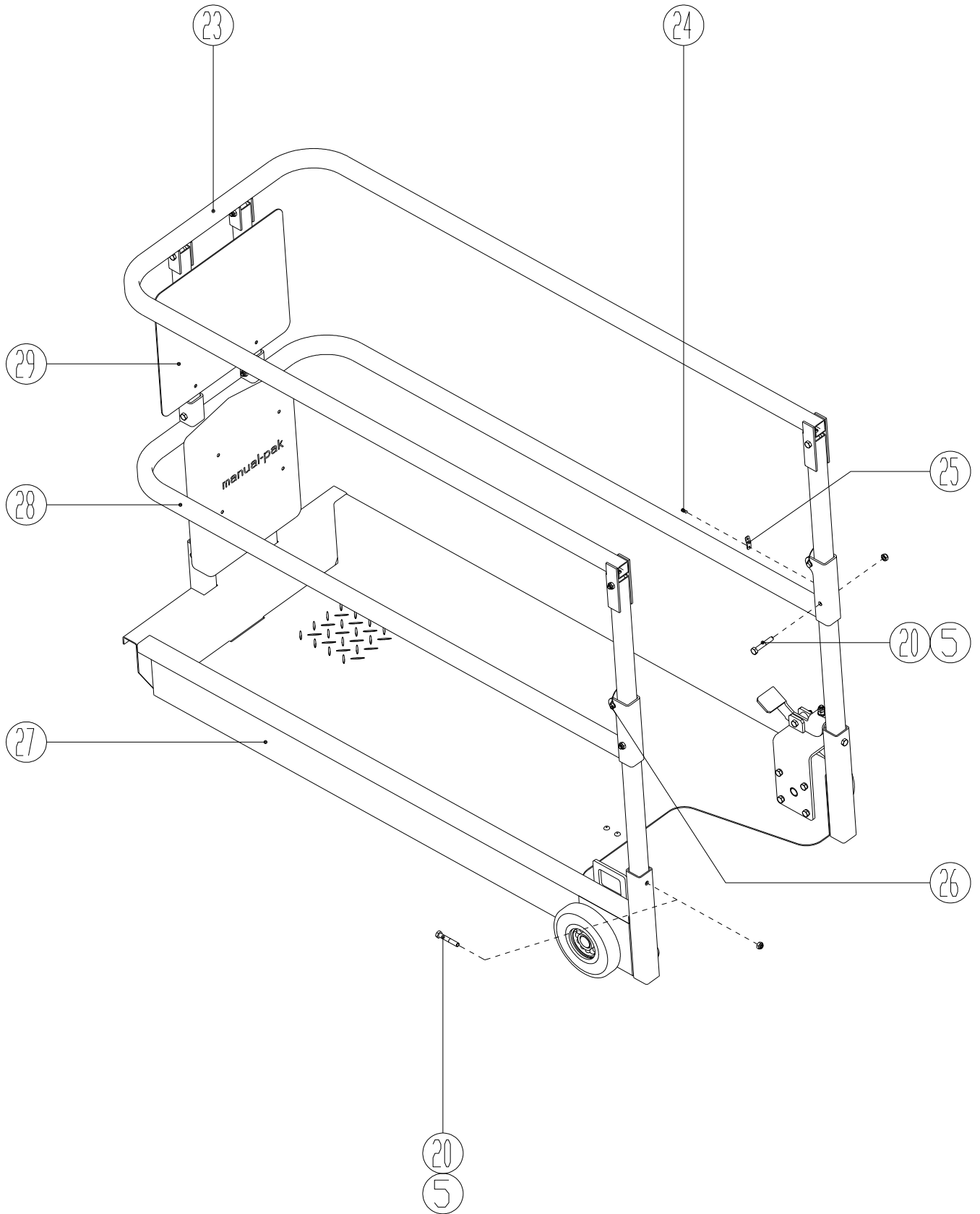


Chart 3-2-2 Folding

Item	Part Number	Qty	Description	Remark
1	101012040059	1	Guard Rails	
2	215010000057	16	Screw M8×20-8.8	
3	215040000005	16	Washer 8-ZND	
4	215010000062	1	Screw M8×45-8.8	
5	215030000026	15	Nut M8-8	
6	101012040013	1	Pedal	
7	215030000005	1	Nut M8-8	
8	215040000034	1	Washer 8-200HV	
9	101012040049	1	Bracket	
10	101012040039	1	Constringent Spring	
11	101012040057	1	Pin	
12	101012040074	4	Pulley	
13	215040000069	4	Snap Ring 72	
14	214010000002	4	Bearing 6306	
15	215050000006	2	Rivet 6×14-ZnD	
16	101012040070	1	Pulley Bracket	
17	101012040031	1	Slider	
18	216070000001	1	File Box	Choice
19	101012040080	1	Platform Extension	
20	215010000163	10	Screw M8×50-8.8	
21	215010000055	4	Screw M6×50-8.8	
22	215030000025	4	Nut M6-8	
23	101012040100	1	Guard Rails	
24	215050000001	2	Rivet 3×8-ZnD	
25	101012040113	2	Fixed Plate	
26	209020000001	2	Safety Pin With Steel Rope $\Phi 6 \times 45$	
27	101012040080	1	Platform Extension	
28	101012040104	1	Guard Rails	
29	101012040084	1	Front Guard Rails	

3.3. Fixed Platform

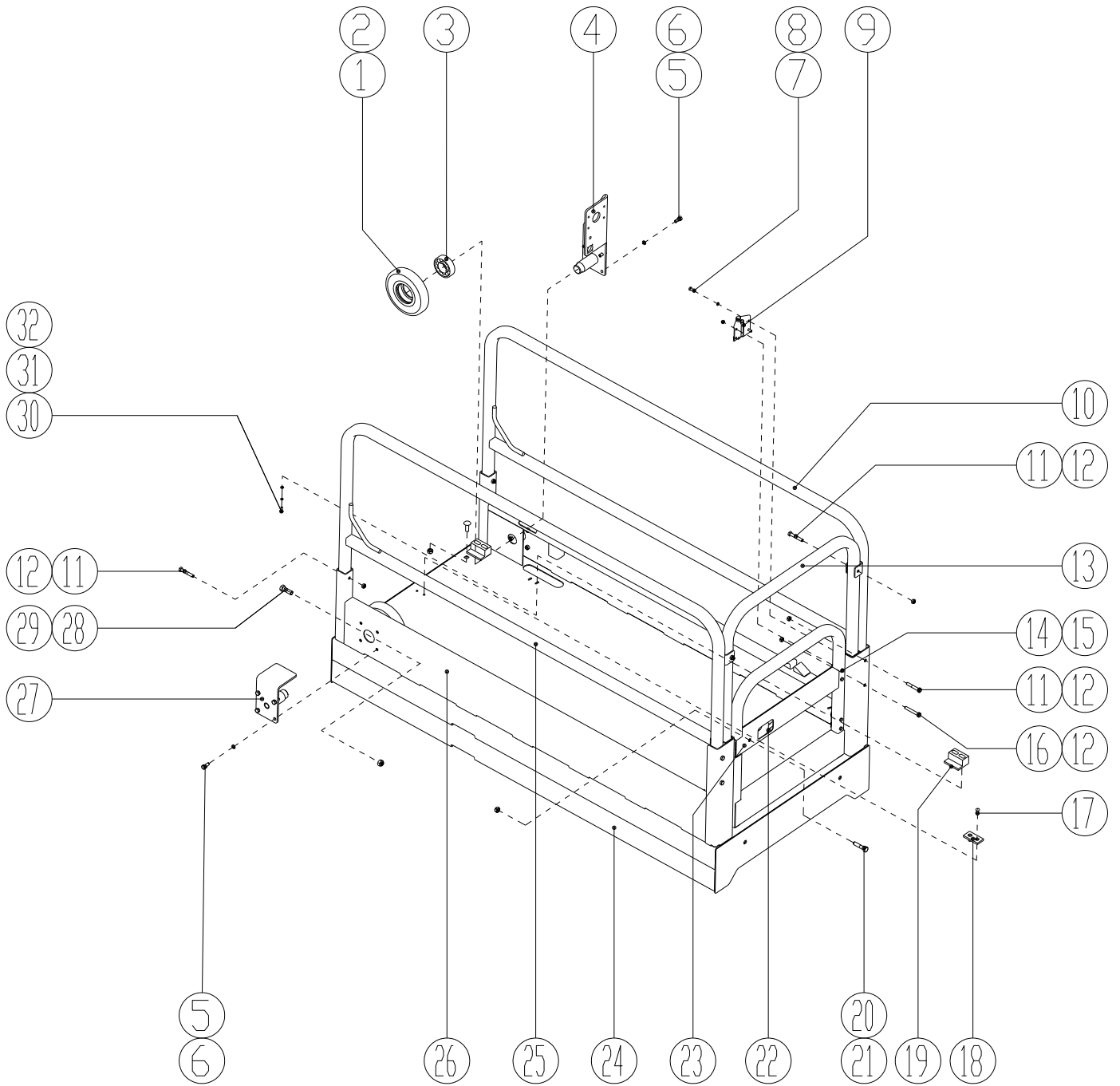


Chart 3-3-1 Fixed

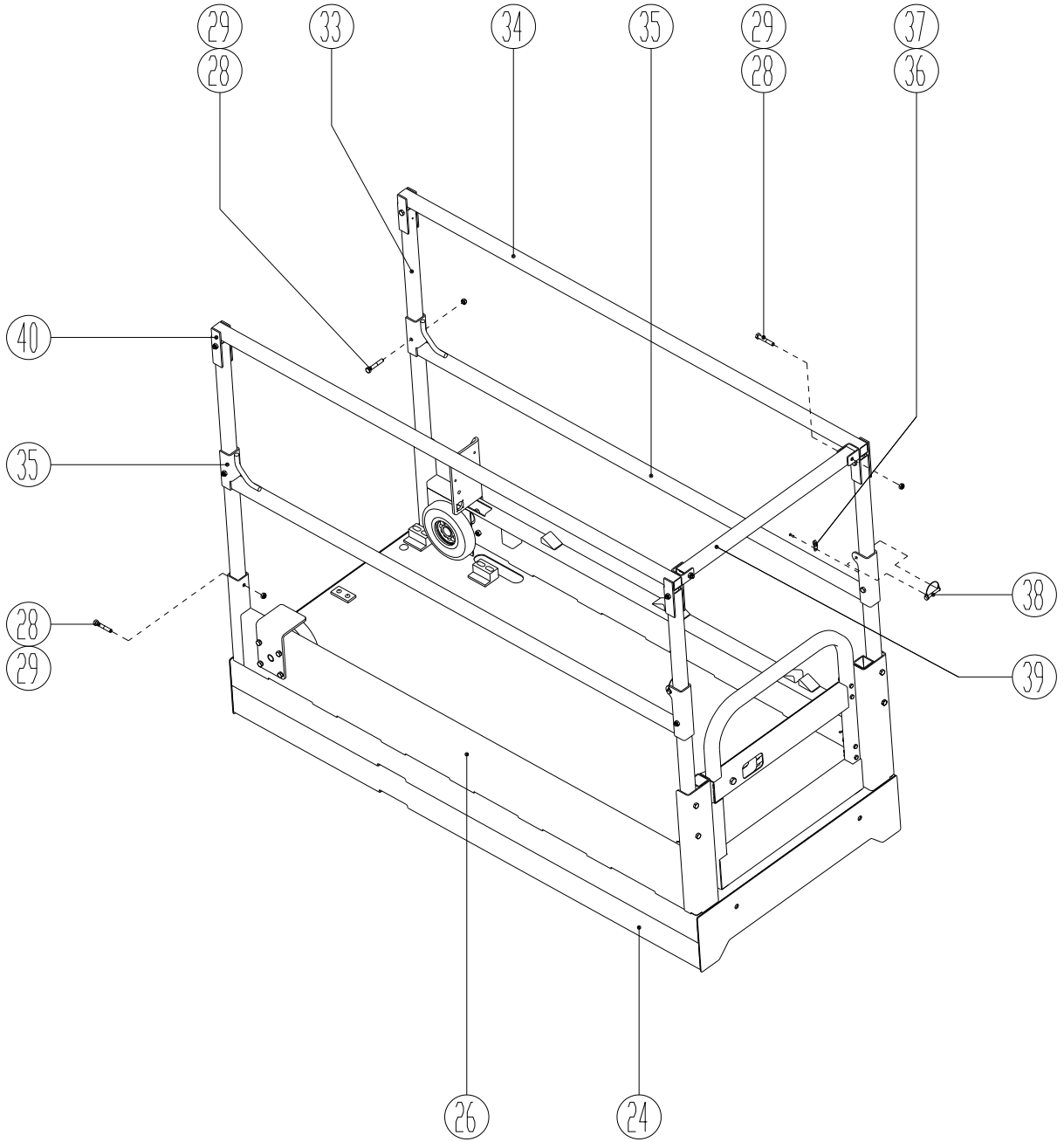
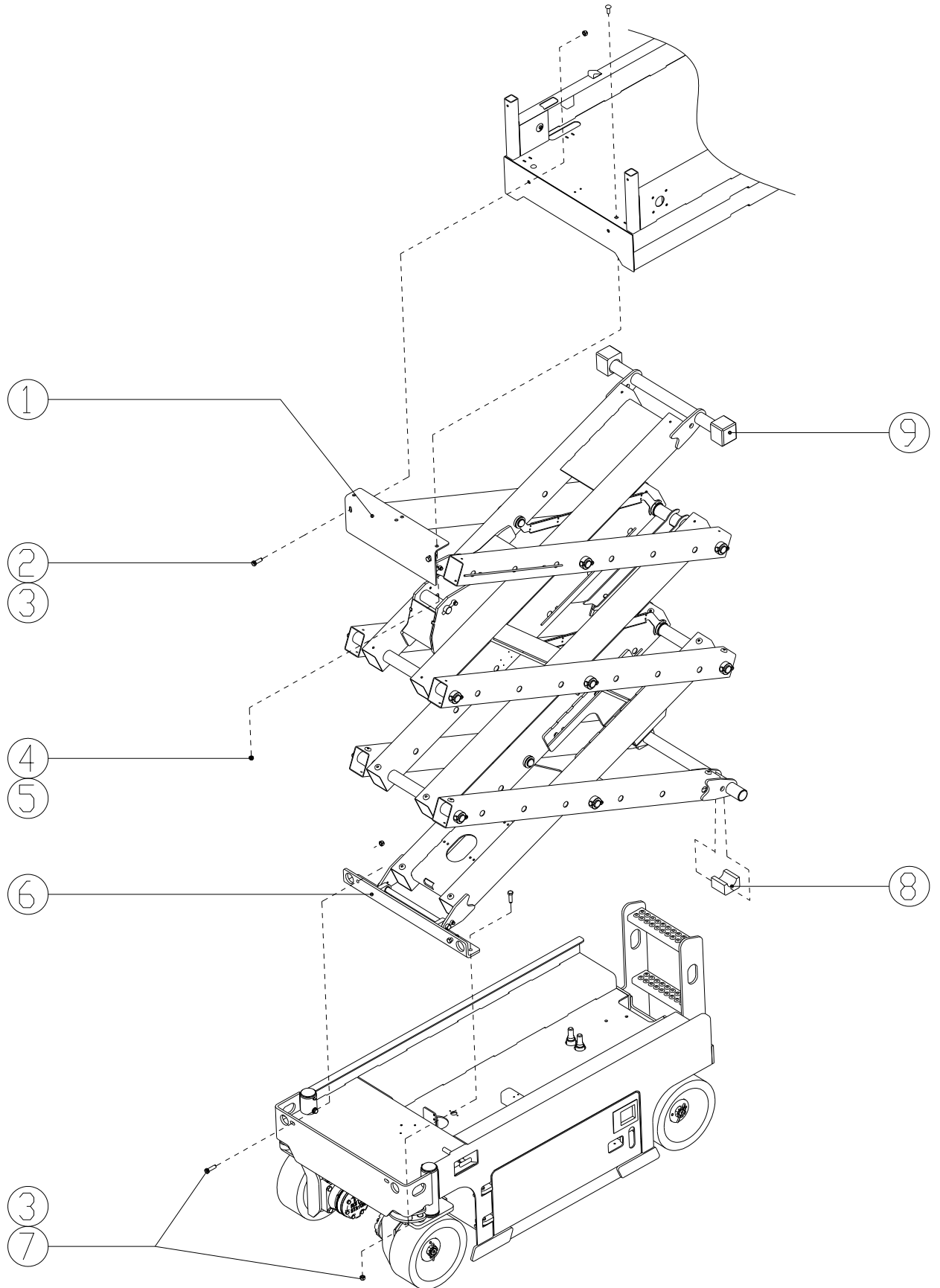


Chart 3-3-2 Folding

Item	Part Number	Qty	Description	Remark
1	101012040074	2	Pulley	
2	215040000069	2	Snap Ring 72	
3	214010000002	2	Bearing 6306	
4	101012040116	1	Bracket	
5	215040000005	8	Washer 8-ZND	
6	215010000057	8	Screw M8×20-8. 8-ZnD	
7	215010000050	4	Screw M6×16-8. 8-ZnD	

8	215040000004	4	Washer 6-ZnD	
9	101012040025	2	Gemel Assembly	
10	101012040026	1	Right Guard Rails	
11	215010000163	8	Screw M8×50-8.8-ZnD	
12	215030000026	8	Nut M8-8-ZnD	
13	101012040077	1	Bend Cannulation	
14	215010000054	4	Screw M6×40-8.8-ZnD	
15	215030000025	4	Nut M6-8-ZnD	
16	215010000064	2	Screw M8×55-8.8-ZnD	
17	215050000006	2	Rivet 6×14-ZnD	
18	101012040031	1	Slider	
19	101012040061	4	Wear Pad Assembly	
20	215010000007	1	Screw M10×45-8.8-ZnD	
21	215030000027	1	Nut M10-8-ZnD	
22	101012040056	1	Lock	
23	101012040030	1	Gate	
24	101012040051	1	4 meter Platform Bracket	
25	101012040036	1	Left Guard Rails	
26	101012040079	1	Fixed Platform	
27	101012040044	1	Bearing Bracket	
28	215010000092	2	Screw M12×35-8.8-ZnD	
29	215030000029	2	Nut M12-8-ZnD	
30	215020000111	8	Bolt M5×16-4.8-Zn	
31	215040000003	8	Washer 5-ZnD	
32	215040000032	8	Washer 5-200HV-ZnD	
33	101012040106	4	Quadrate Cannulation	
34	101012040085	1	Guard Rails	
35	101012040083	1	Guard Rails	
36	101012040113	2	Fixed Plate	
37	215050000001	2	Rivet 3×8-ZnD	
38	209020000001	2	Safety Pin With Steel Rope $\Phi 6 \times 45$	
39	101012040108	2	Quadrate Cannulation	
40	101012040103	2	Guard Rails	

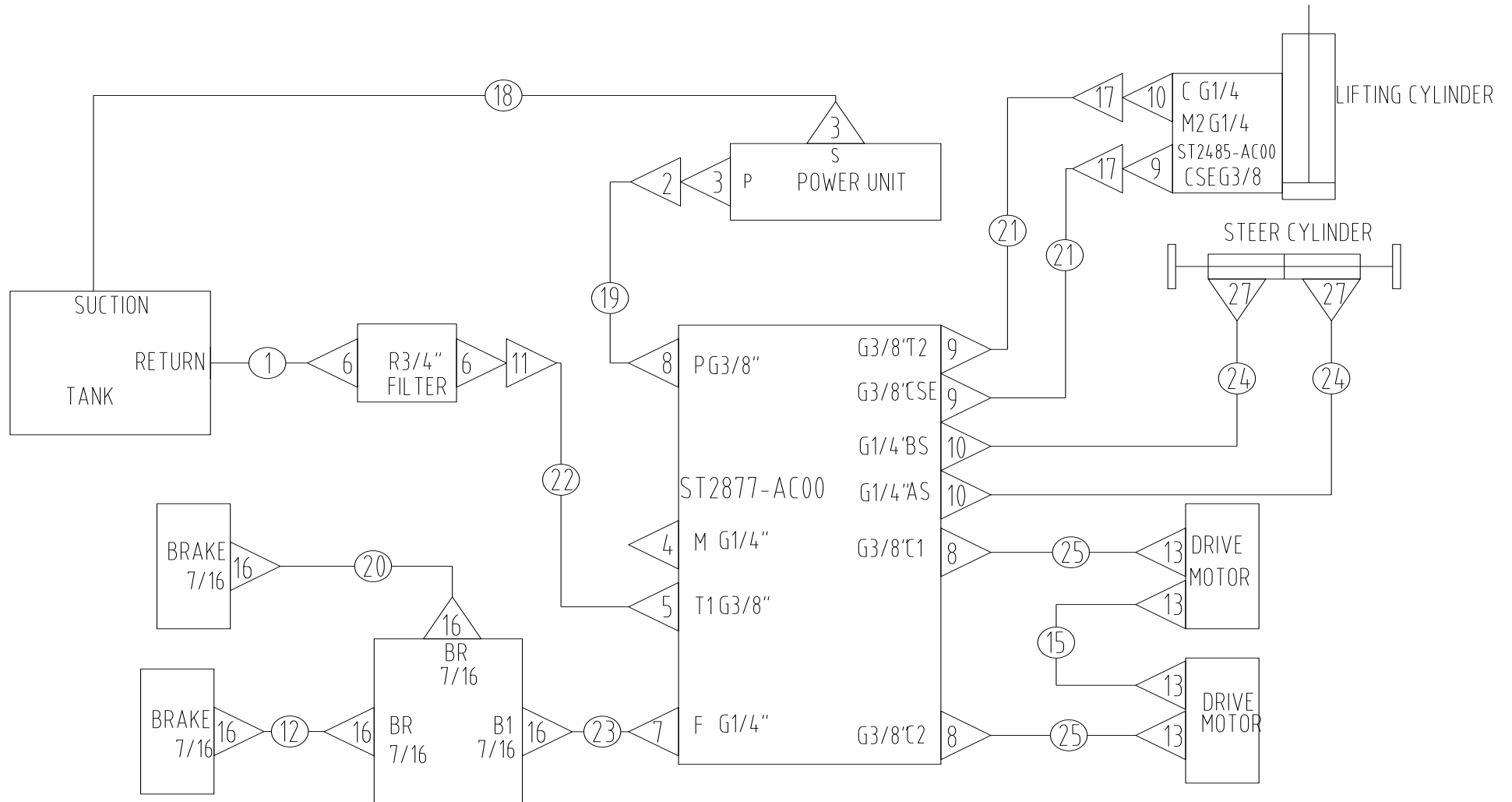
4. Scissor Assembly Installation



Item	Part Number	Qty	Description	Remark
1	101012010051	1	Fixed Plate	
2	215010000092	2	Screw M12×35-8.8-ZnD	
3	215030000029	6	Nut M12-8-ZnD	
4	215010000161	2	Screw M10×30-8.8-ZND	
5	215030000027	2	Nut M10-8-ZnD	
6	101012010069	1	Fixed Plate	
7	215010000094	4	Screw M12×40-8.8-ZnD	
8	101012010022	2	Slider	
9	101012010052	2	Slider	

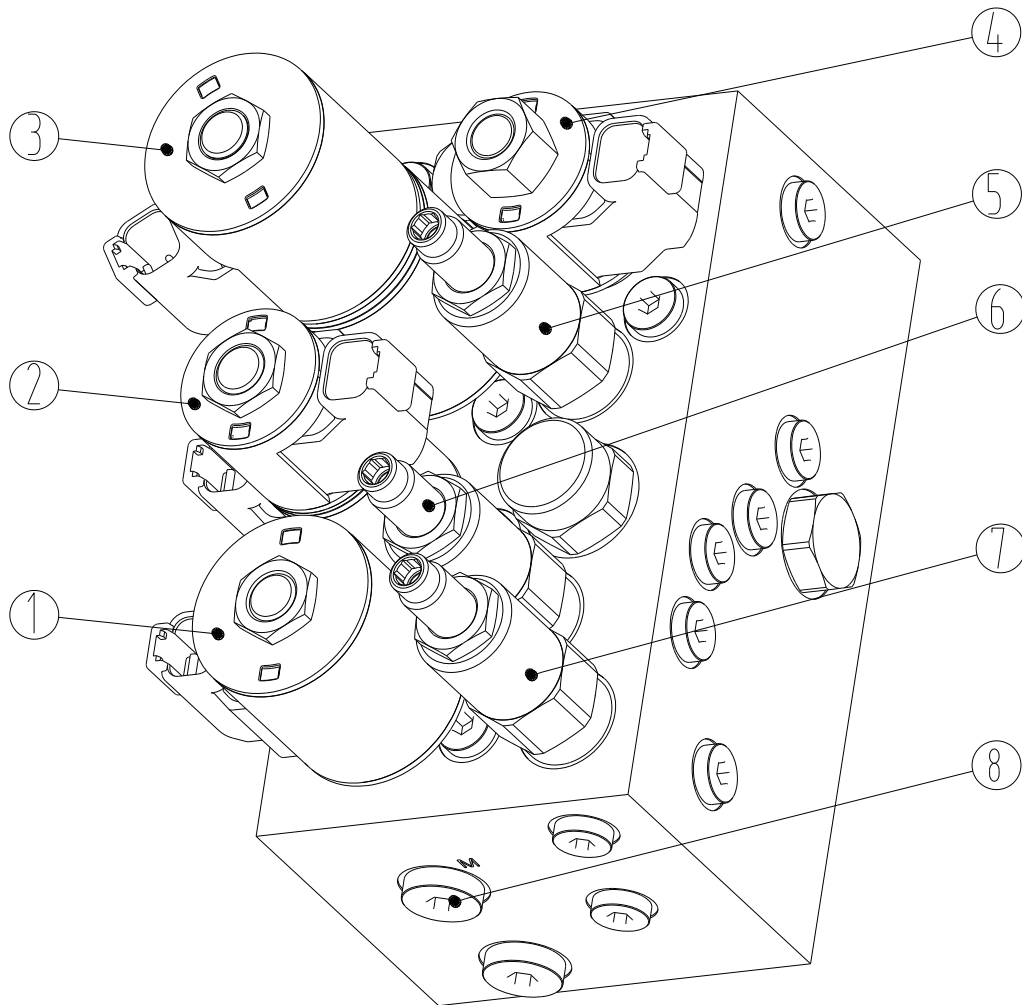
5. Hydraulic System

5.1. Hydraulic Hoses and Fittings



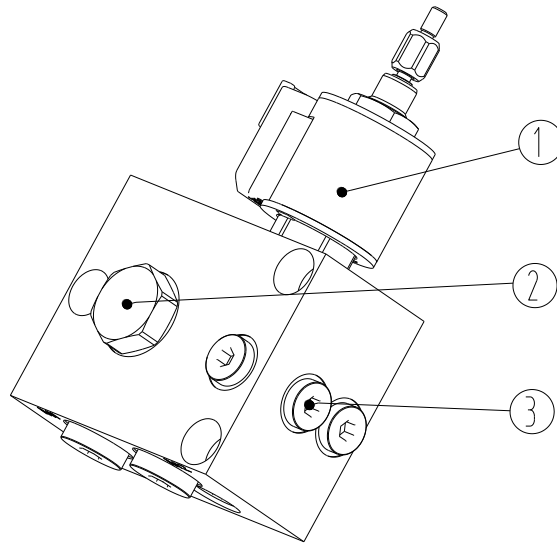
Item	Part Number	Qty	Description	Remark
1	213050000074	1	Hose	
2	213010000011	1	Fitting	
3	213010000001	2	Fitting	
4	213010000010	1	Test Fitting	
5	213010000003	1	Fitting	
6	213010000014	2	Fitting	
7	213010000007	1	Fitting	
8	213010000005	3	Fitting	
9	213010000006	3	Fitting	
10	213010000012	3	Fitting	
11	213010000008	1	Fitting	
12	213050000079	1	Hose	
13	213010000004	4	Fitting	
14	213060000001	1	Fitting	
15	213050000075	1	Hose	
16	213010000013	5	Fitting	
17	213010000009	2	Fitting	
18	213050000081	1	Hose	
19	213050000078	1	Hose	
20	213050000076	1	Hose	
21	213050000082	2	Hose	
22	213050000084	1	Hose	
23	213050000083	1	Hose	
24	213050000077	2	Hose	
25	213050000080	2	Hose	
26	216110000001	3	Hose jacket	
27	213010000002	2	Fitting	

5.2. Function Manifold..... 20204000002



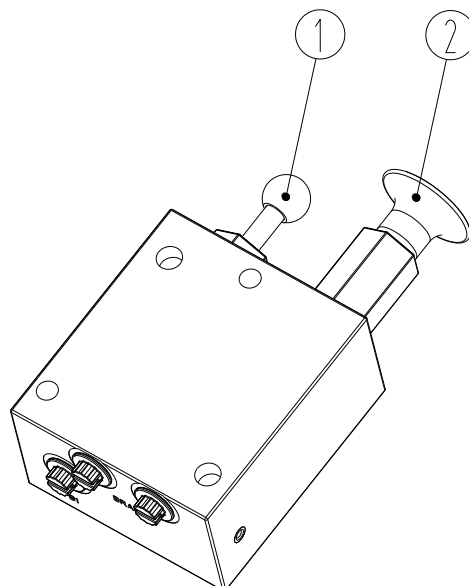
Item	Description	Remark
1	Two-position four-way solenoid reversing valve	Platform Lifting
2	Three-position four-way solenoid reversing valve	Turn Right/Left
3	Three-position four-way solenoid reversing valve	Drive Forward/Back
4	Two-position two-way solenoid reversing valve	Brake Release
5	Relief valve	Turning control
6	Relief valve	System control
7	Relief valve	Lifting control
8	Test fitting	Test port

5.3. Lifting Control Manifold.....20204000002



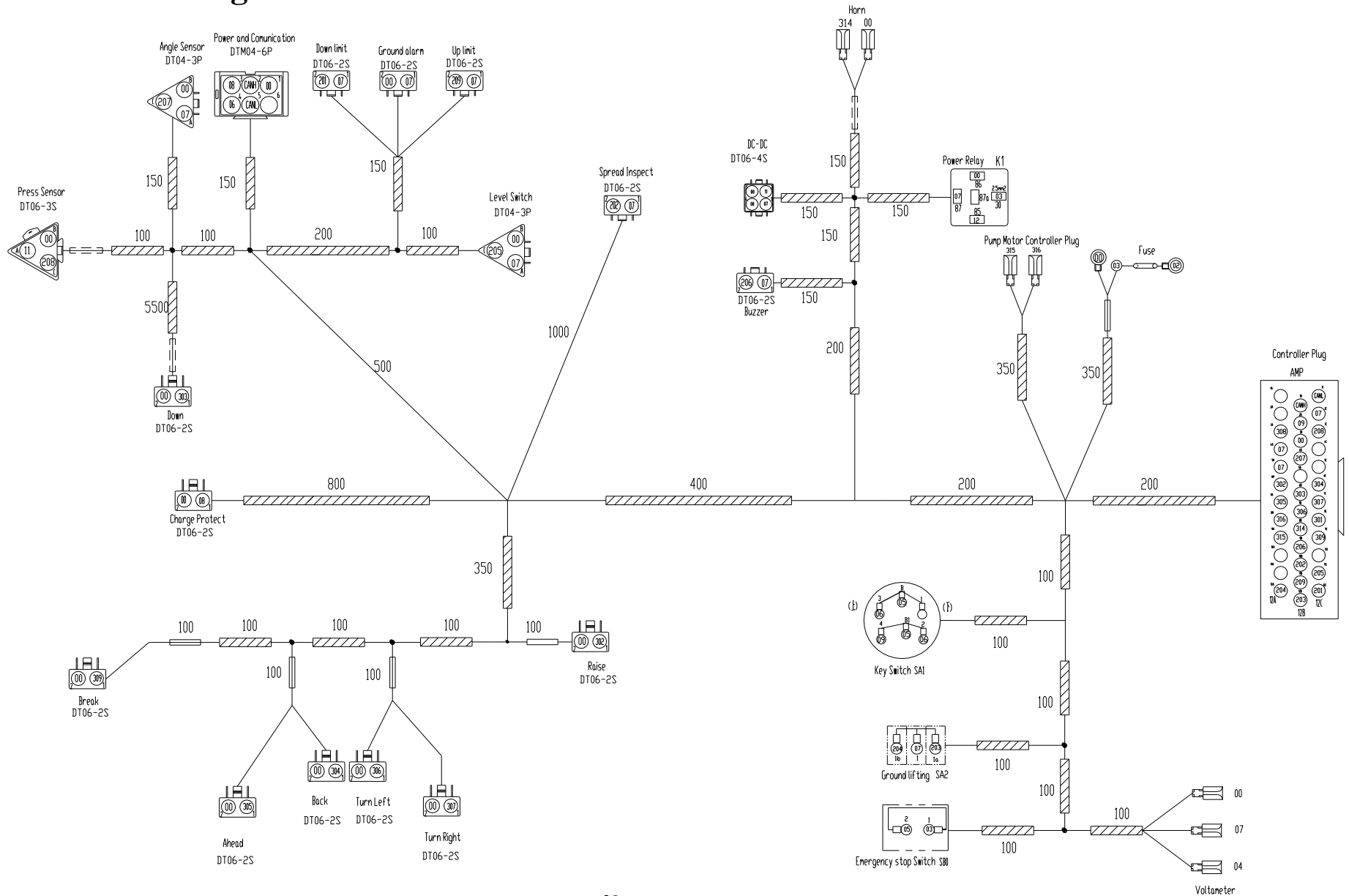
Item	Description	Remark
1	Lowering solenoid valve	Lowering control
2	Check valve	Keep pressure
3	Damping	Lowering speed control

5.4. Manual Brake Release Manifold.....20204000003

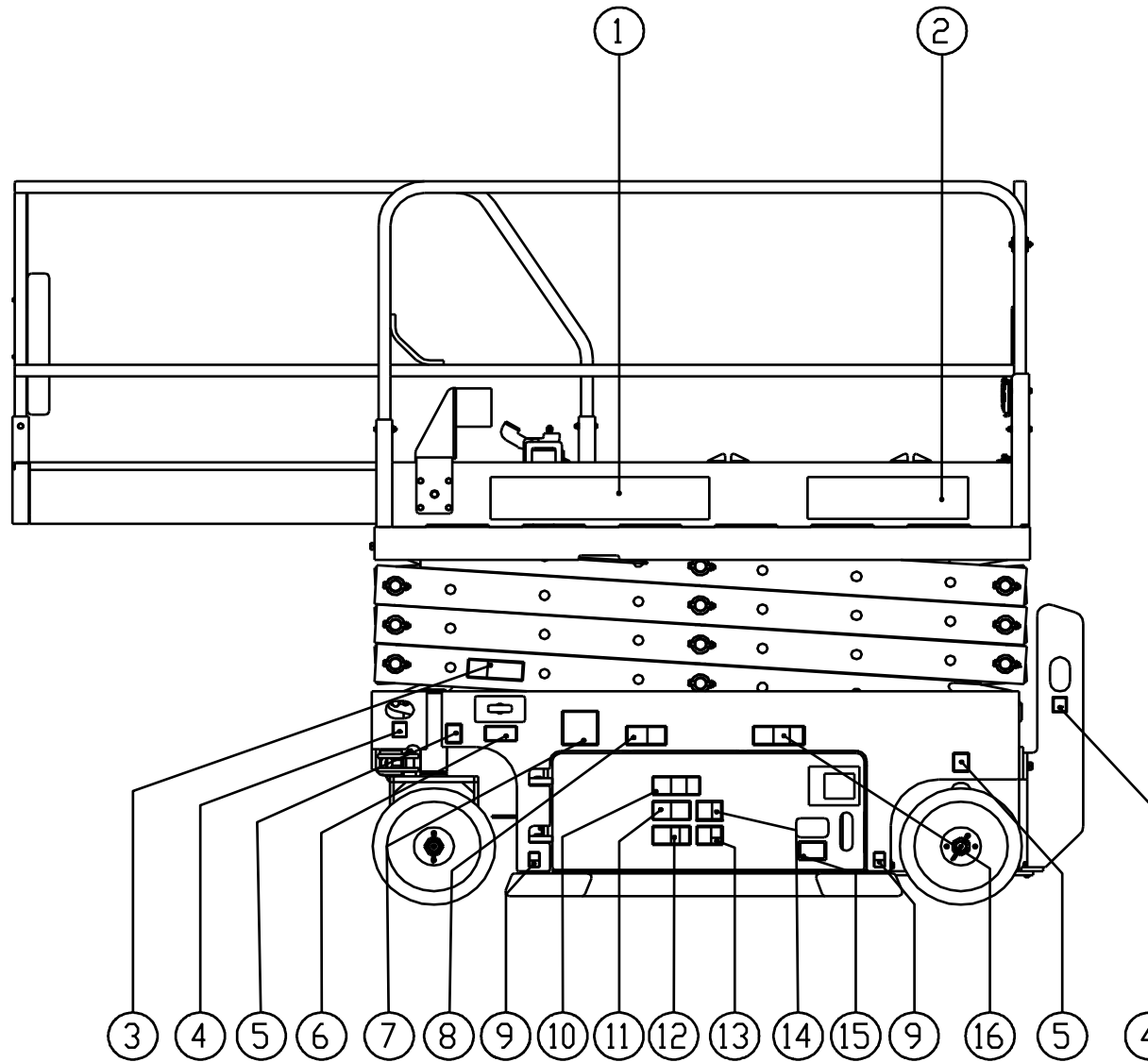


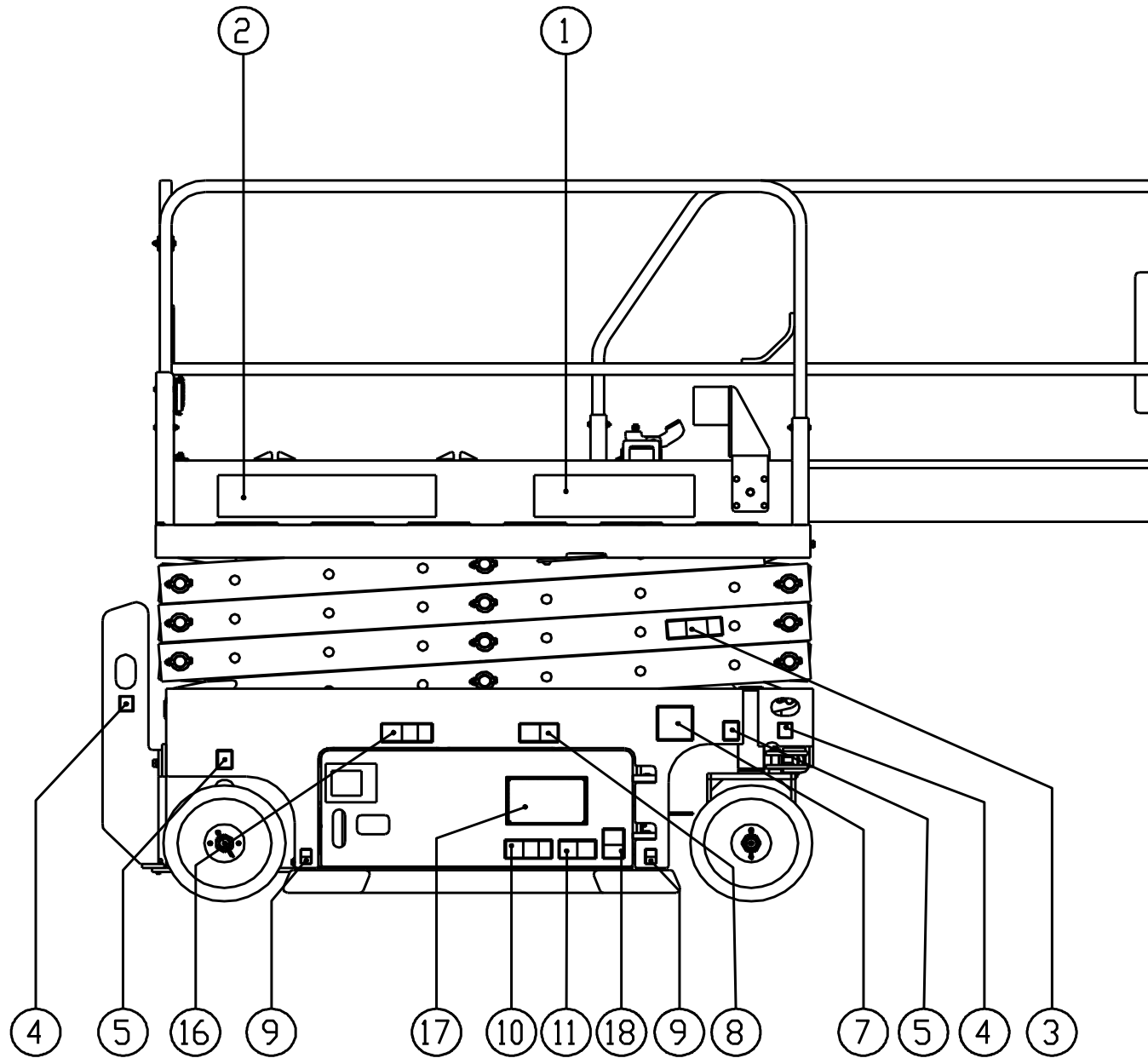
Item	Description	Remark
1	Reversing Valve	Change to manual brake release mode
2	Manual pump	Manual brake release

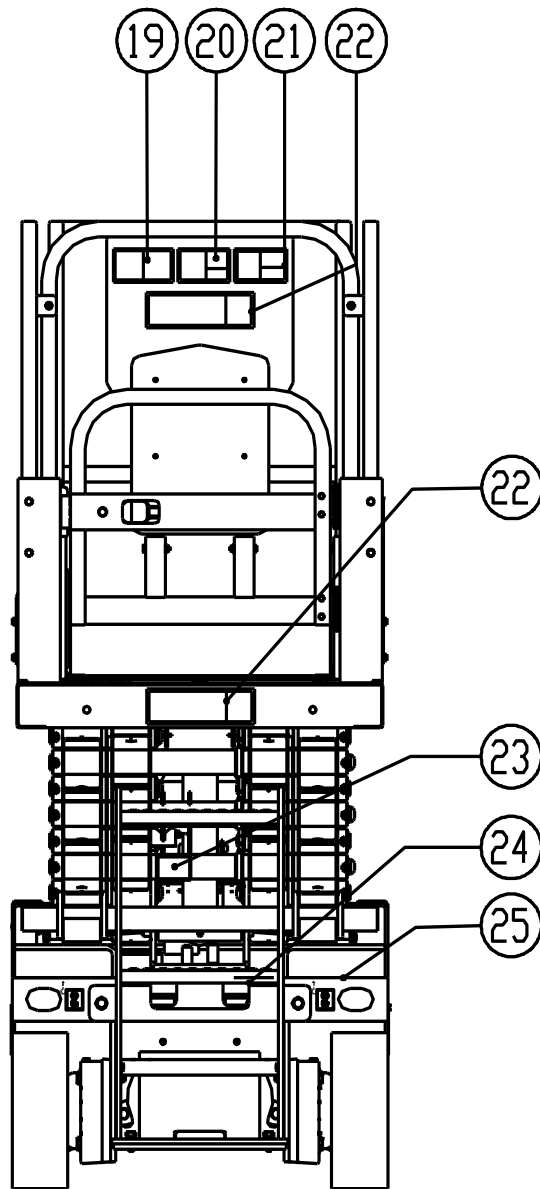
6. Electrical Wiring



7. Decals







Item	Code	Description	Qty
1	101012100036	Manufacturer	2
2	101012100002	Model	2
3	101012100018	Crushing Hazard: Keep away from moving parts. Reach operation manual carefully.	4
4	101012100003	Lifting point	4
5	101012100013	Wheel Load	4
6	101012100011	Emergency Lowering	1
7	101012100016	Lifting instructions	2
8	101012100005	Electrocution Hazard: Always contact the electric power line owner.	2
9	101012100020	Crushing hazard: Keep clear of outriggers and tires before lowering.	4
10	101012100030	Only trained maintenance personnel should access compartments. All compartments must remain closed and secured during operation. Read operation manual.	2
11	101012100008	Tip-over Hazard: Close chassis trays before raising the platform or driving the machine.	1
12	101012100001	Explosion/Burn Hazard: Keep all open flames and sparks away. Wear personal protective equipment, including face shield, gloves and long sleeve shirt. Read the operation manual carefully.	1
13	101012100023	Tip-over Hazard: Replace batteries with proper weight, Batteries are used as counterweight and are critical to machine stability, battery weight.	2
14	101012100010	Electrocution/Fire Hazard: Connect charger to a grounded AC 3-wire electrical outlet only, Before each use, inspect for damaged cord, cables and wires, Replace damaged items before operating.	1
15	101012100021	Charge instructions	1
16	101012100029	Crushing Hazard: Engage safety arm before performing maintenance or repair, Read the service manual carefully.	2
17	101012100039	Serial Label	1

18	101012100012	Injection Hazard: Escaping fluid under pressure can penetrate skin, causing serious injury.	2
19	101012100027	Read the operation manual carefully.	1
20	101012100019	Tip-over Hazard: Do not drive the machine on or near uneven terrain, unstable surfaces or other hazardous conditions with the platform raised. Read the operation manual carefully.	1
21	101012100007	Tip-over Hazard: If tilt-alarm sounds, Lower the platform and Move the machine to level surface.	1
22	101012100031	Platform Loading Capacity	2
23	101012100017	Crushing Hazard: Engage safety arm before performing maintenance or repair.	1
24	101012100004	Collision Hazard: Make sure machine is on a firm and level surface or secured and chock wheels before release brakes.	1
25	101012100026	Fork position	2